

- ▶ **RECOVERED PAPERS STOCKS**
- ▶ **RCCM STOCKS**
- ▶ **RCCM PRODUCTION**
- ▶ **RCCM DELIVERIES (deducted)**

The statistics issued by Containerboard Europe are proprietary to the Association. They are sent to member associations or individual members in accordance with the rules laid down in the internal regulations and must not be distributed outside the members in question unless explicitly approved by the CCB Advisory Board



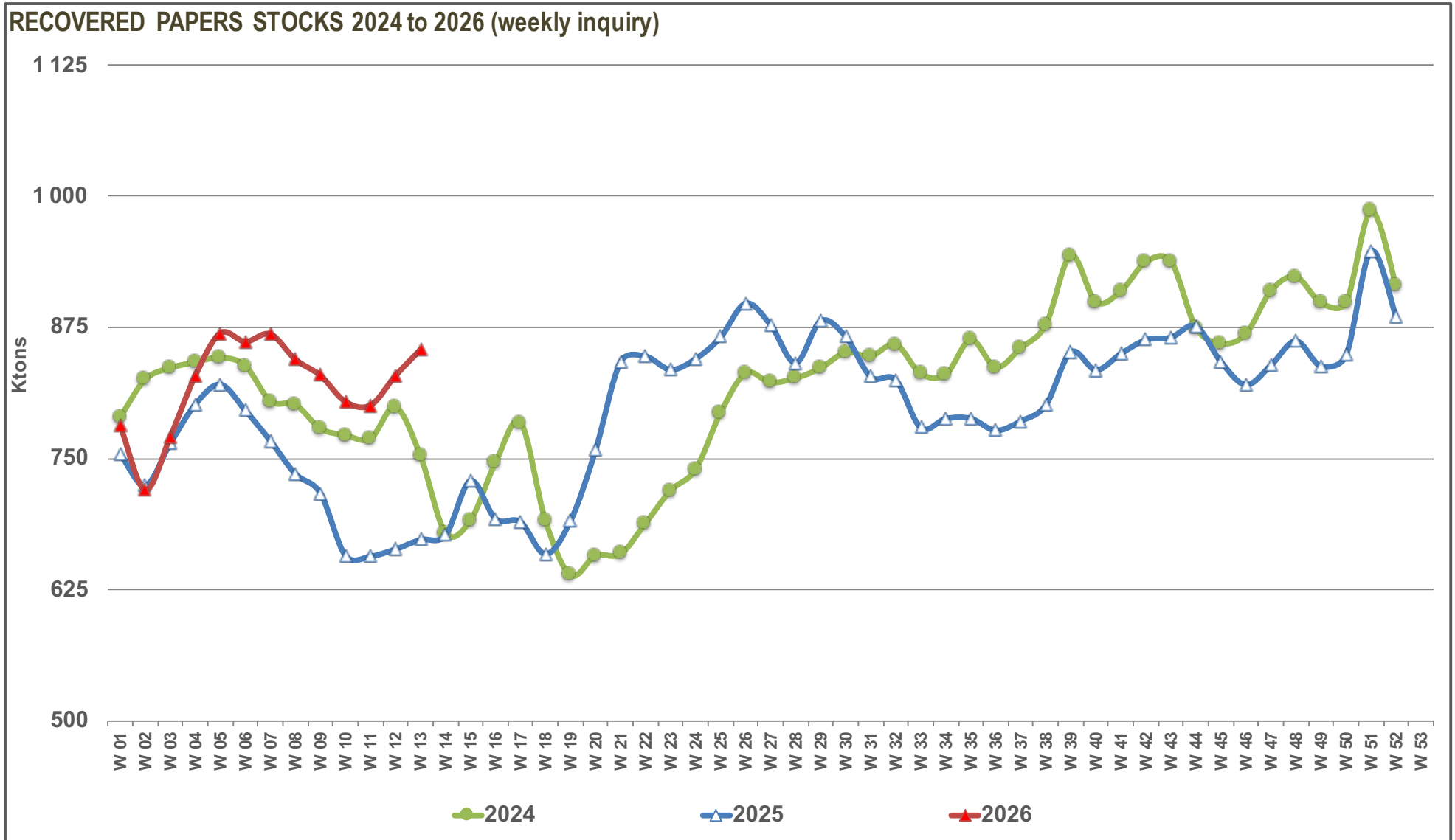
in tons & %	2026												
	01	02	03	04	05	06	07	08	09	10	11	12	13
RP STOCKS* (92,6%)	780 997	720 280	771 057	829 194	869 551	861 455	868 695	844 495	829 235	804 322	800 873	829 023	853 889
Days of production	10,7	9,9	10,6	11,3	11,9	11,9	11,9	11,3	11,0	10,7	10,6	11,0	11,3
Δ STOCKS / Previous Week	tons -103 927	-60 717	+50 777	+58 137	+40 357	-8 096	+7 240	-24 200	-15 260	-24 913	-3 449	+28 150	+24 866
	% -11,7%	-7,8%	+7,0%	+7,5%	+4,9%	-0,9%	+0,8%	-2,8%	-1,8%	-3,0%	-0,4%	+3,5%	+3,0%
Same Week Previous Year	tons 754 092	724 429	764 588	801 738	820 673	795 897	767 008	735 486	717 025	657 747	656 961	663 743	672 770
	% +3,6%	-0,6%	+0,8%	+3,4%	+6,0%	+8,2%	+13,3%	+14,8%	+15,6%	+22,3%	+21,9%	+24,9%	+26,9%
of which													
FRANCE (95,4%)	94 366	88 862	88 959	100 183	107 929	110 096	104 330	102 717	100 214	100 499	98 079	96 871	106 933
Days of production	9,6	9,4	9,3	10,3	11,1	11,5	10,4	10,0	9,7	9,8	9,5	9,4	10,3
Stocks Same Week Previous Year	86 995	83 086	83 823	93 701	95 607	96 648	93 478	92 432	91 246	82 813	79 050	78 503	74 169
GERMANY (99,8%)	256 201	231 671	248 590	280 510	296 653	298 076	309 813	301 726	293 588	274 059	275 789	296 011	306 482
Days of production	9,2	8,3	8,9	10,0	10,7	10,8	11,1	10,8	10,2	9,4	9,5	10,2	10,5
Stocks Same Week Previous Year	246 142	253 336	272 592	288 706	300 080	290 480	286 021	265 990	254 299	240 073	243 535	244 399	252 838
SPAIN , PORTUGAL (95,4%)	107 648	92 337	99 243	102 873	115 042	111 748	112 631	116 018	116 596	113 385	113 440	110 253	108 086
Days of production	10,4	8,9	9,5	9,8	11,0	10,7	10,7	10,7	10,8	10,5	10,5	10,2	10,0
Stocks Same Week Previous Year	107 295	97 145	104 311	113 056	123 631	119 667	114 896	109 066	103 871	86 220	85 524	77 610	85 586
NL, BE, UK (84,6%)	44 510	46 978	51 461	54 835	45 774	46 545	50 390	42 341	38 034	39 835	39 956	53 884	53 088
Days of production	6,4	6,8	7,4	7,9	6,6	6,8	7,5	6,1	5,4	5,6	5,7	7,6	7,5
Stocks Same Week Previous Year	39 228	42 424	43 274	39 723	41 320	41 986	44 195	39 374	39 846	41 906	40 787	47 117	42 278
ITALY , AUSTRIA (94,0%)	178 626	166 691	177 828	180 375	189 063	181 810	176 027	169 872	174 512	170 779	169 372	169 133	171 705
Days of production	15,7	14,9	15,9	16,0	16,5	15,8	15,3	14,8	15,2	14,8	14,7	14,3	14,6
Stocks Same Week Previous Year	186 148	164 922	171 661	173 405	173 071	159 399	150 550	148 986	153 440	130 653	133 191	139 147	142 602
BG, CZ, HR, HU, LT, PL, RO, SK (82,1%)	99 646	93 741	104 976	110 418	115 090	113 180	115 504	111 821	106 291	105 765	104 237	102 871	107 595
Days of production	12,4	11,7	13,1	13,9	14,5	14,6	14,8	14,3	13,5	13,5	13,1	12,9	13,5
Stocks Same Week Previous Year	88 284	83 516	88 927	93 147	86 964	87 717	77 868	79 638	74 323	76 082	74 874	76 967	75 297

* stock level on Monday 6 o'clock a.m.

(%) : representativity of the sample based on the total European 2024 production or on the country (or group of countries) 2024 production.

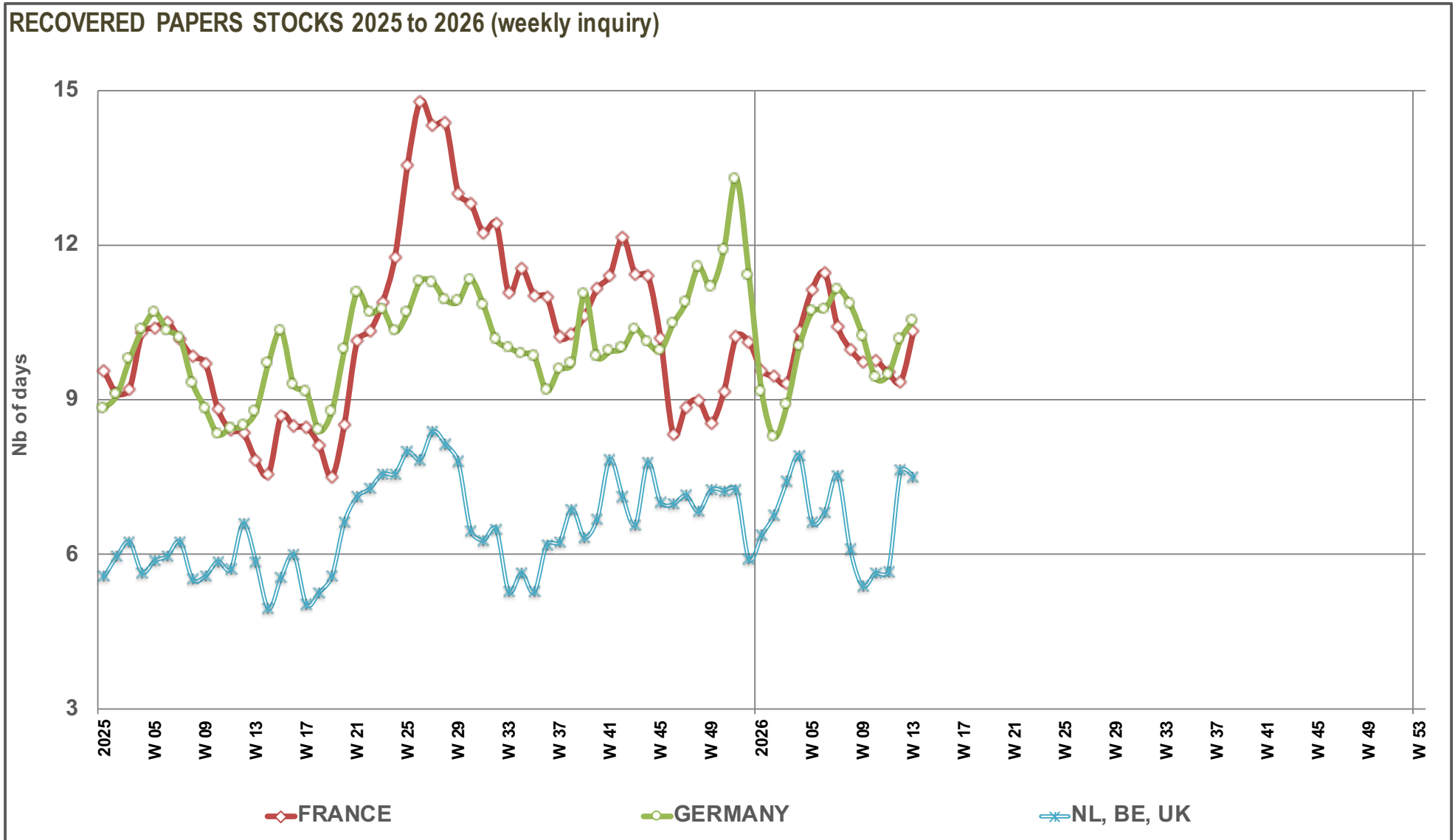
HISTORICAL SAMPLE

• Graph 1 •



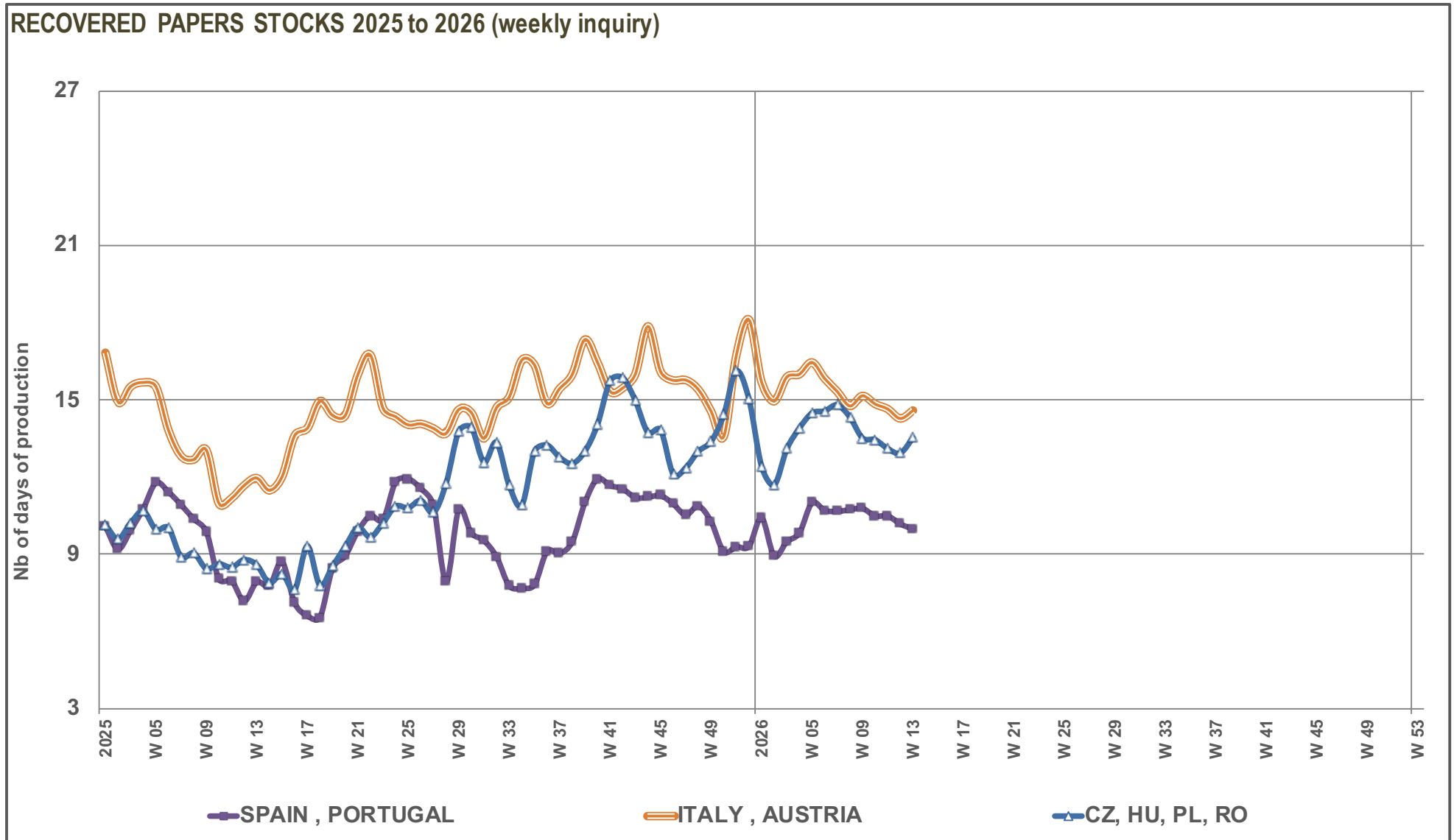
HISTORICAL SAMPLE

• Graph 2 •



HISTORICAL SAMPLE

• Graph 3 •



HISTORICAL SAMPLE

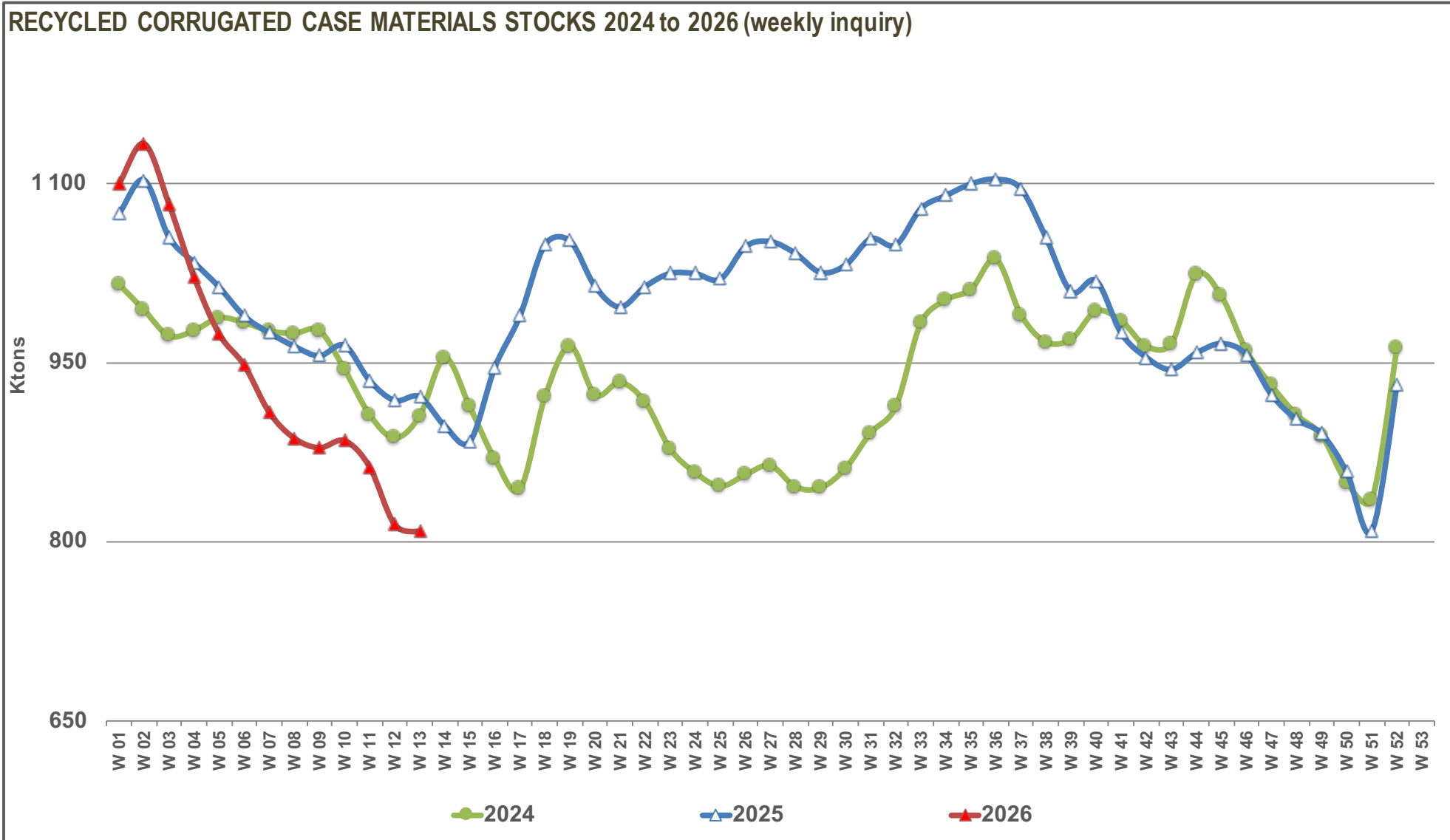

in tons & %	2026												
	01	02	03	04	05	06	07	08	09	10	11	12	13
RCCM STOCKS* (92,6%)	1099 813	1133 278	1082 449	1021 524	973 896	947 756	908 304	886 641	878 712	884 577	862 793	814 479	808 490
Days of supply	14,2	14,6	13,7	12,7	12,2	11,8	11,3	11,0	10,9	11,0	10,7	10,3	10,3
Δ STOCKS / Previous Week	tons +168 964	+33 465	-50 829	-60 925	-47 628	-26 140	-39 452	-21 663	-7 929	+5 865	-21 784	-48 314	-5 989
	% +18,2%	+3,0%	-4,5%	-5,6%	-4,7%	-2,7%	-4,2%	-2,4%	-0,9%	+0,7%	-2,5%	-5,6%	-0,7%
Same Week Previous Year	tons 1074 784	1102 831	1054 826	1033 830	1013 200	988 933	974 915	963 609	955 673	964 349	935 037	918 321	921 428
	% +2,3%	+2,8%	+2,6%	-1,2%	-3,9%	-4,2%	-6,8%	-8,0%	-8,1%	-8,3%	-7,7%	-11,3%	-12,3%
of which													
FRANCE (95,4%)	150 462	152 329	146 529	139 315	135 733	133 731	131 939	128 896	129 844	127 012	123 345	125 412	119 127
Days of supply	14,8	15,0	14,1	13,1	12,8	12,8	12,4	12,1	12,2	11,9	11,5	11,7	11,1
Stocks Same Week Previous Year	123 506	129 198	120 073	111 871	109 297	108 943	104 269	102 298	101 502	102 219	103 108	100 979	102 171
GERMANY (99,8%)	438 613	449 523	428 180	400 629	371 744	358 210	336 429	326 420	323 815	327 349	319 423	295 504	297 309
Days of supply	14,7	15,0	14,0	12,8	11,9	11,5	10,8	10,4	10,4	10,5	10,2	9,5	9,8
Stocks Same Week Previous Year	454 519	459 285	437 003	430 462	415 961	401 386	384 693	386 959	386 265	385 497	372 237	371 020	374 634
SPAIN , PORTUGAL (95,4%)	163 188	173 544	169 837	165 269	152 772	150 657	149 830	151 041	149 769	150 837	147 915	134 063	142 662
Days of supply	15,0	15,9	15,7	15,0	13,6	13,4	13,3	13,5	13,3	13,4	13,2	11,1	12,2
Stocks Same Week Previous Year	171 773	171 680	166 441	163 393	163 581	157 371	153 918	154 572	149 007	154 250	146 230	148 323	142 971
NL, BE, UK (84,6%)	109 255	110 572	102 353	93 669	93 382	92 509	88 505	89 187	89 736	86 378	86 652	75 122	75 875
Days of supply	15,1	15,3	14,2	13,0	13,0	13,2	12,6	12,7	12,8	12,3	12,3	10,7	10,8
Stocks Same Week Previous Year	95 590	96 925	95 407	94 821	94 172	94 093	96 534	102 897	105 154	98 837	98 549	89 659	95 190
ITALY , AUSTRIA (94,0%)	118 469	132 057	128 287	121 936	118 262	116 193	109 084	103 506	96 935	104 013	100 763	100 509	93 131
Days of supply	10,2	11,6	11,2	10,2	9,7	9,6	9,0	8,5	8,0	8,6	8,3	8,3	7,7
Stocks Same Week Previous Year	112 862	128 871	131 751	119 595	115 037	114 953	115 407	111 681	108 143	117 725	115 402	111 623	108 757
BG, CZ, HR, HU, LT, PL, RO, SK (82,1%)	119 826	115 253	107 263	100 706	102 003	96 456	92 517	87 591	88 613	88 988	84 695	83 869	80 386
Days of supply	13,4	12,9	12,0	11,3	11,4	11,2	10,7	10,1	10,3	10,3	9,8	9,7	9,3
Stocks Same Week Previous Year	116 534	116 872	104 151	113 688	115 152	112 187	120 094	105 202	105 602	105 821	99 511	96 717	97 705

* stock level on Monday 6 o'clock a.m.

(%) : representativity of the sample based on the total European 2024 production or on the country (or group of countries) 2024 production.

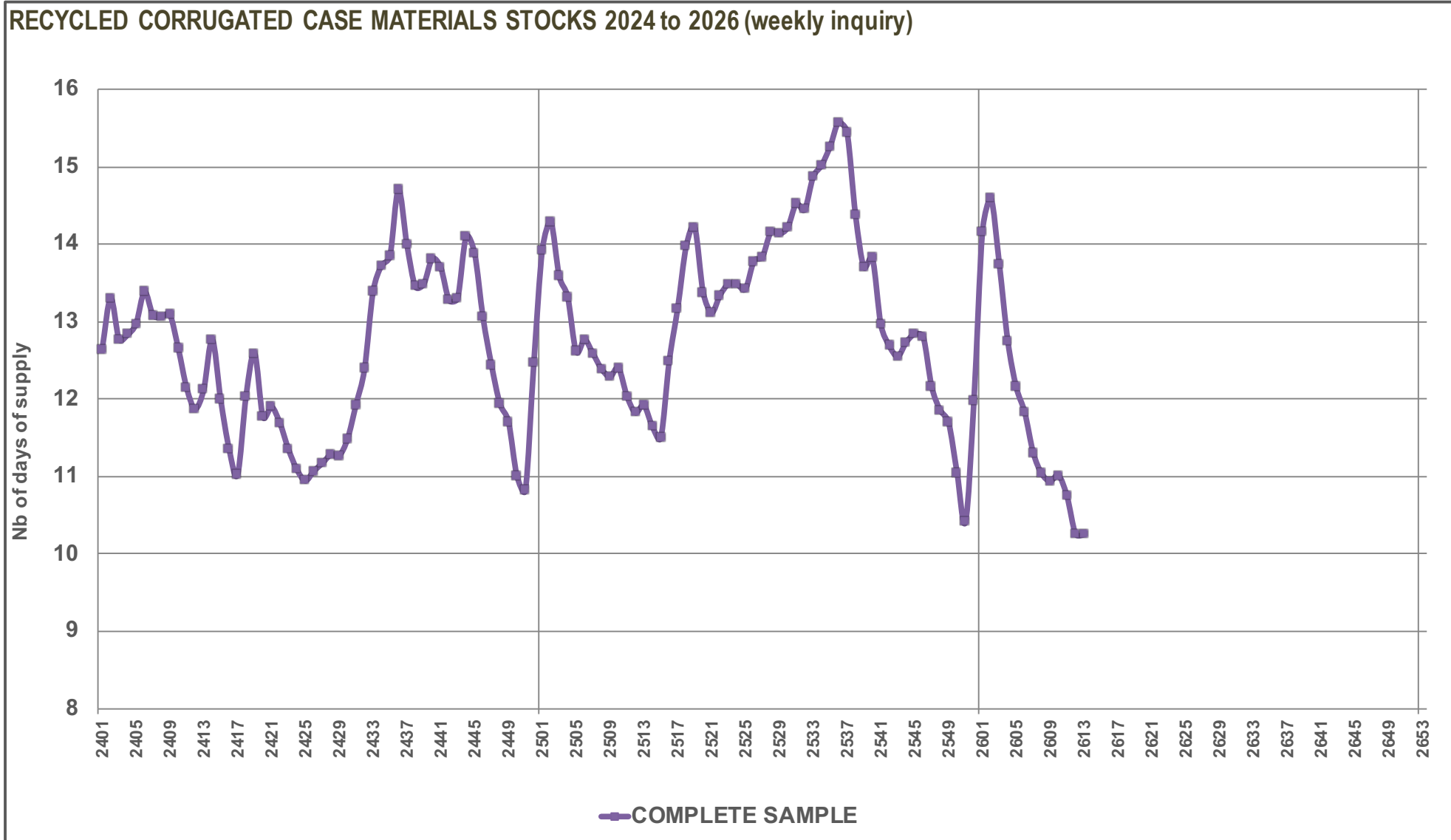
HISTORICAL SAMPLE

• Graph 4 •



HISTORICAL SAMPLE

• Graph 5 •



HISTORICAL SAMPLE

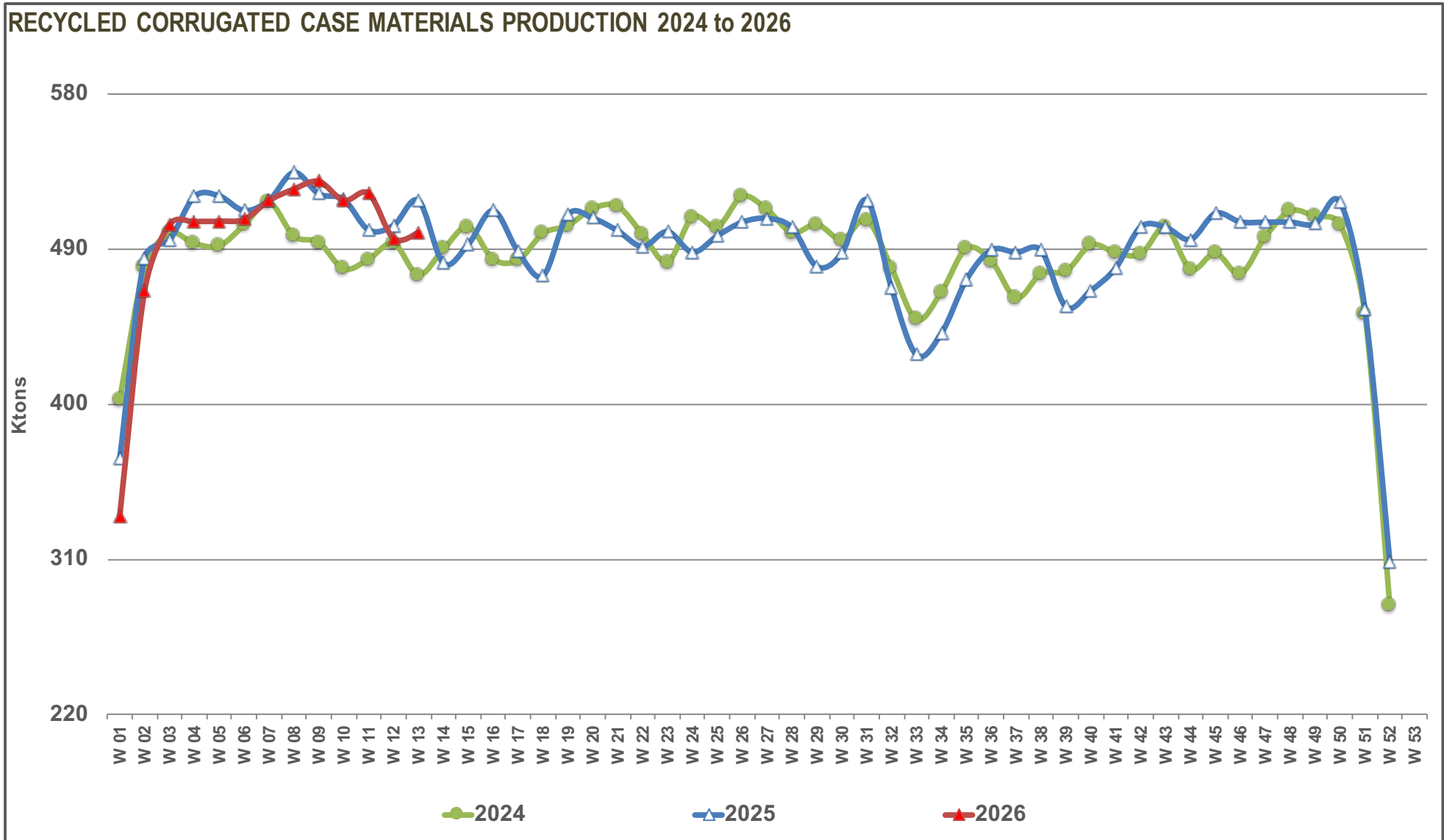

in tons & %	2026										YEAR TO DATE	
	05	06	07	08	09	10	11	12	13	(Since week 01)		
WEEKLY PRODUCTION* (92,6%)	506 206	507 267	518 187	524 861	529 240	518 192	522 268	496 180	499 555	CUMULATED PRODUCTION	6 432 503	
Δ PRODUCTION / Previous Week	tons	+ 312	+1 061	+10 920	+6 674	+4 379	-11 048	+4 076	-26 088	+3 375	Δ CUM. PROD. / CUM. PROD. Previous year	-85 703
	%	+0,1%	+0,2%	+2,2%	+1,3%	+0,8%	-2,1%	+0,8%	-5,0%	+0,7%		-1,3%
Same Week Previous Year	tons	520 857	512 351	518 412	534 490	521 994	518 844	501 065	503 780	518 073	CUMULATED PROD. PREVIOUS YEAR	6 518 206
	%	-2,8%	-1,0%	-0,0%	-1,8%	+1,4%	-0,1%	+4,2%	-1,5%	-3,6%		
of which												
FRANCE (95,4%)	66 988	67 076	72 594	71 441	68 540	66 785	71 543	72 356	60 981		856 417	
<i>Production Same Week Previous Year</i>	64 748	63 219	61 439	66 770	61 605	62 993	63 360	64 783	65 862		805 358 +6,3%	
GERMANY (99,8%)	189 083	192 635	194 350	194 073	206 709	200 526	195 202	174 948	191 908		2 459 368	
<i>Production Same Week Previous Year</i>	195 741	187 980	193 501	202 476	200 940	191 618	182 161	191 623	188 269		2 443 572 +0,6%	
SPAIN , PORTUGAL (95,4%)	67 340	68 669	74 429	76 848	74 147	72 595	70 466	74 701	69 832	CUMULATED PRODUCTION	910 904	
<i>Production Same Week Previous Year</i>	72 150	72 062	73 748	73 249	71 013	76 414	70 976	74 690	74 034	927 290	-1,8%	
NL, BE, UK (84,6%)	47 964	45 665	45 181	49 272	49 608	45 794	48 756	35 056	48 425	(Current and previous year in tons - Δ in %)	570 451	
<i>Production Same Week Previous Year</i>	48 995	46 383	49 514	50 485	49 237	42 044	47 691	37 889	50 385	609 583	-6,4%	
ITALY , AUSTRIA (94,0%)	81 477	78 514	77 147	79 580	74 921	78 744	80 327	84 355	76 338		959 341	
<i>Production Same Week Previous Year</i>	79 137	82 279	82 172	80 388	78 034	84 453	77 480	76 552	78 142	971 141	-1,2%	
BG, CZ, HR, HU, LT, PL, RO, SK (82,1%)	53 354	54 708	54 486	53 647	55 315	53 748	55 974	54 764	52 071		676 022	
<i>Production Same Week Previous Year</i>	60 086	60 428	58 038	61 122	61 165	61 322	59 397	58 243	61 381	761 262	-11,2%	

* cumulated production on Monday 6 o'clock a.m.

(%) : representativity of the sample based on the total European 2024 production or on the country (or group of countries) 2024 production.

HISTORICAL SAMPLE

• Graph 6 •





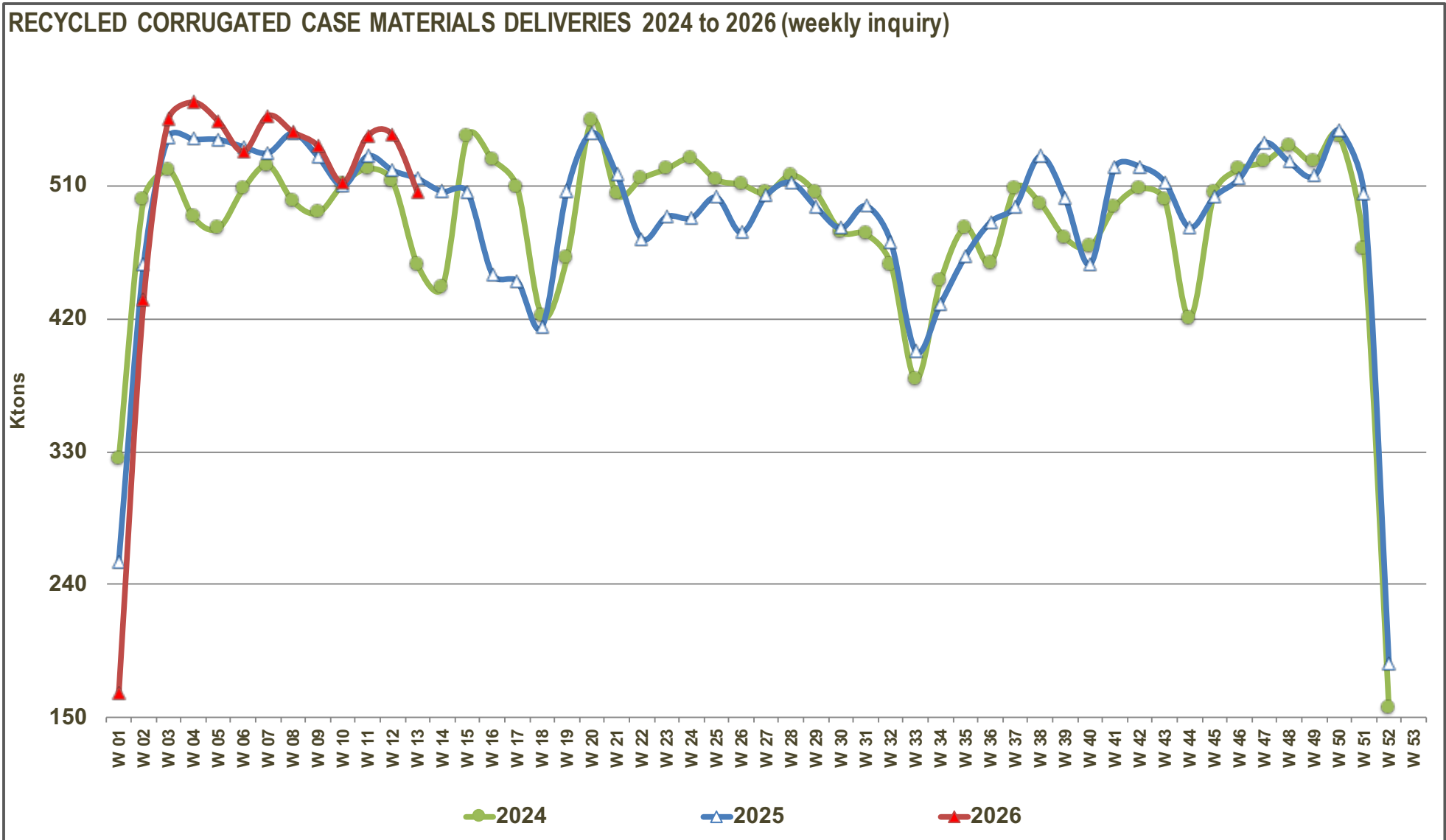
in tons & %	2026										YEAR TO DATE	
	05	06	07	08	09	10	11	12	13	(Since week 01)		
WEEKLY DELIVERIES (92,6%)	553 834	533 407	557 639	546 524	537 169	512 327	544 052	544 494	505 544	CUMULATED DELIVERIES	6 554 862	
Δ DELIVERIES/Previous Week	tons	-12 985	-20 427	+24 232	-11 115	-9 355	-24 842	+31 725	+ 442	-38 950	Δ CUM. DEL. / CUM. DEL.Previous year	-3 858
	%	-2,3%	-3,7%	+4,5%	-2,0%	-1,7%	-4,6%	+6,2%	+0,1%	-7,2%		-0,1%
Same Week Previous Year	tons	541 487	536 618	532 430	545 796	529 930	510 168	530 377	520 496	514 966	<i>CUMULATED DEL. PREVIOUS YEAR</i>	6 558 720
	%	+2,3%	-0,6%	+4,7%	+0,1%	+1,4%	+0,4%	+2,6%	+4,6%	-1,8%		
of which												
FRANCE (95,4%)	70 570	69 078	74 386	74 484	67 592	69 617	75 210	70 289	67 266		867 806	
<i>Deliveries Same Week Previous Year</i>	67 322	63 573	66 113	68 741	62 401	62 276	62 471	66 912	64 670		821 244 +5,7%	
GERMANY (99,8%)	217 968	206 169	216 131	204 082	209 314	196 992	203 128	198 867	190 103		2 517 667	
<i>Deliveries Same Week Previous Year</i>	210 242	202 555	210 194	200 210	201 634	192 386	195 421	192 840	184 655		2 458 903 +2,4%	
SPAIN , PORTUGAL (95,4%)	79 837	70 784	75 256	75 637	75 419	71 527	73 388	88 553	61 233	CUMULATED DELIVERIES	916 065	
<i>Deliveries Same Week Previous Year</i>	71 962	78 272	77 201	72 595	76 578	71 171	78 996	72 597	79 386	950 091	-3,6%	
NL, BE, UK (84,6%)	48 251	46 538	49 185	48 590	49 059	49 152	48 482	46 586	47 672	(Current and previous year in tons - Δ in %)	592 551	
<i>Deliveries Same Week Previous Year</i>	49 644	46 462	47 073	44 122	46 980	48 361	47 979	46 779	44 854	590 969	+0,3%	
ITALY , AUSTRIA (94,0%)	85 151	80 583	84 256	85 158	81 492	71 666	83 577	84 609	83 716		965 574	
<i>Deliveries Same Week Previous Year</i>	83 695	82 363	81 718	84 114	81 572	74 871	79 803	80 331	81 008	962 174	+0,4%	
BG, CZ, HR, HU, LT, PL, RO, SK (82,1%)	52 057	60 255	58 425	58 573	54 293	53 373	60 267	55 590	55 554		695 199	
<i>Deliveries Same Week Previous Year</i>	58 622	63 393	50 131	76 014	60 765	61 103	65 707	61 037	60 393	775 339	-10,3%	

* weekly deliveries = weekly production ± Δ stocks

(%) : representativity of the sample based on the total European 2024 production or on the country (or group of countries) 2024 production.

HISTORICAL SAMPLE

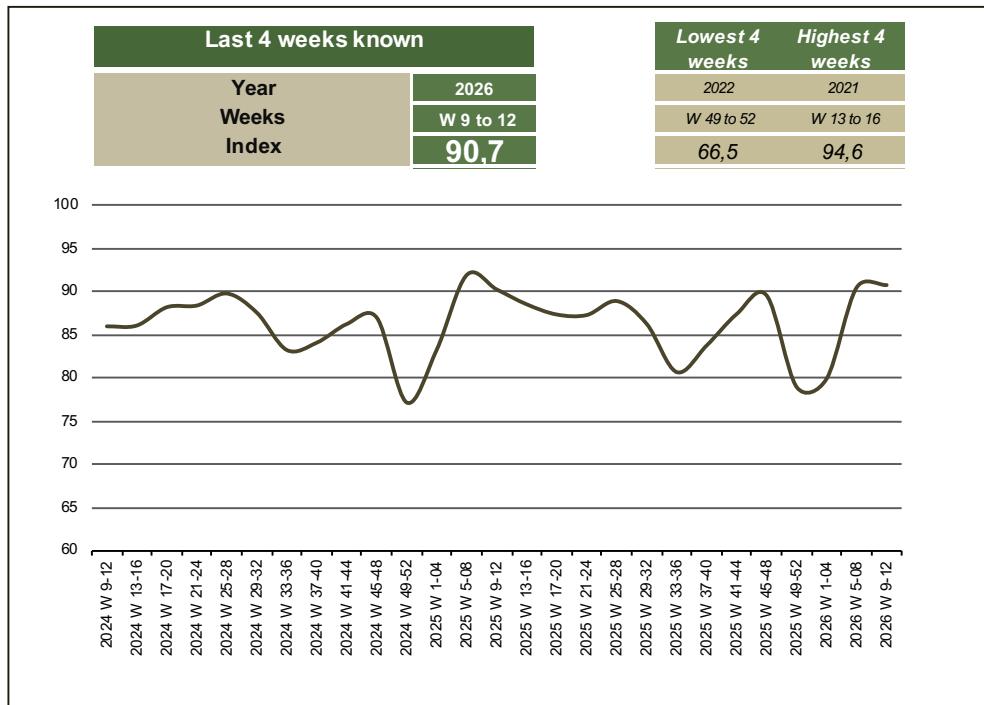
• Graph 7 •



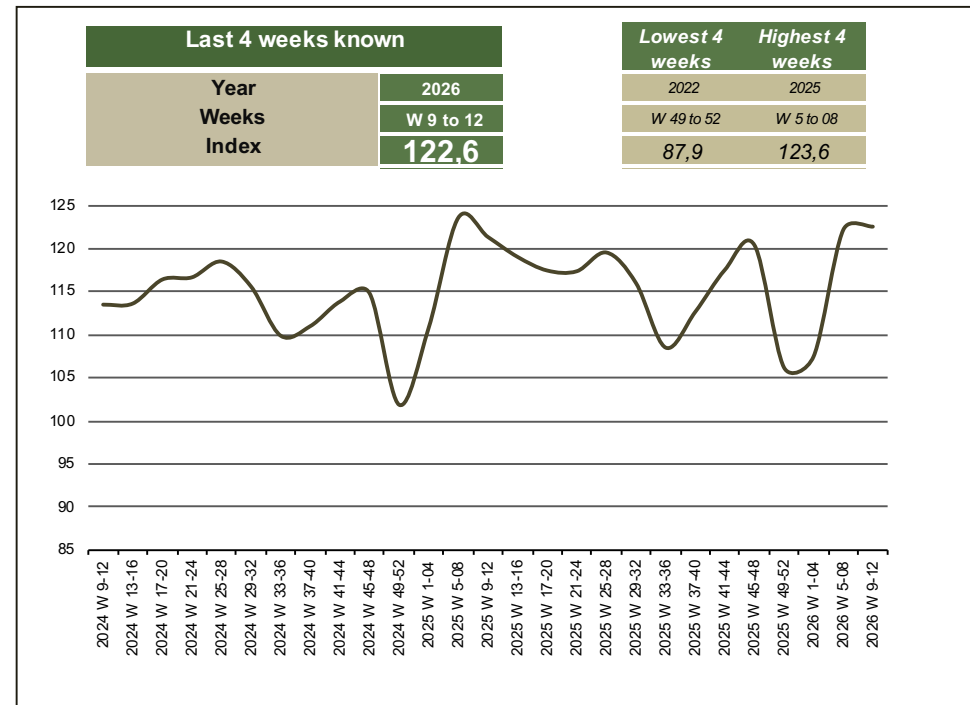
HISTORICAL SAMPLE

EUROPEAN SAMPLE • Year 2026 • weeks 9 to 12

updated every 4 weeks

 **UTILISATION RATE * (in %)**


* From the 1st January 2019 the series have been changed, consequently comparisons and calculation are only valid as of January 2019.

 **PRODUCTION LEVEL (in index **)**


** Basis 100 : production during the weeks 01 to 04 of 2019

NOTE 1 : The capacity is calculated per calendar year as follow :

- The production of the first four weeks of the considered calendar year
- This theoretical result is taken into account with 98% (considering maintenance stops, break or any other technical problems), to get a "real" capacity in tons / year.
- The capacity can be amended during the year if big changes occurred such as closure of plant, new capacities, long stoppages ...

NOTE 2 : The utilisation rate index is calculated as follow :

- $[(\text{Production during the last 4 weeks}) / (\text{cumulated capacities during 4 weeks})] \times 100.$

ENLARGED SAMPLE
RE: recovered papers stocks intended for the production of recycled corrugated case materials


in tons & %	2026												
	01	02	03	04	05	06	07	08	09	10	11	12	13
RP STOCKS* (94,5%)	800 197	735 642	788 550	847 582	887 247	878 071	884 510	860 304	848 681	823 514	819 855	847 175	871 788
Days of production	10,7	9,9	10,6	11,4	11,9	11,9	11,8	11,3	11,1	10,7	10,7	11,1	11,4
Δ STOCKS / Previous Week	tons -106 010	-64 555	+52 908	+59 032	+39 665	-9 176	+6 439	-24 206	-11 623	-25 167	-3 659	+27 320	+24 613
	% -11,7%	-8,1%	+7,2%	+7,5%	+4,7%	-1,0%	+0,7%	-2,7%	-1,4%	-3,0%	-0,4%	+3,3%	+2,9%
<i>Same Week Previous Year</i>	<i>tons 776 392</i>	<i>747 944</i>	<i>789 416</i>	<i>827 889</i>	<i>846 420</i>	<i>821 979</i>	<i>792 740</i>	<i>760 468</i>	<i>737 254</i>	<i>675 871</i>	<i>676 317</i>	<i>683 698</i>	<i>692 790</i>
	<i>% +3,1%</i>	<i>-1,6%</i>	<i>-0,1%</i>	<i>+2,4%</i>	<i>+4,8%</i>	<i>+6,8%</i>	<i>+11,6%</i>	<i>+13,1%</i>	<i>+15,1%</i>	<i>+21,8%</i>	<i>+21,2%</i>	<i>+23,9%</i>	<i>+25,8%</i>
of which													
FRANCE (95,4%)	94 366	88 862	88 959	100 183	107 929	110 096	104 330	102 717	100 214	100 499	98 079	96 871	106 933
Days of production	9,6	9,4	9,3	10,3	11,1	11,5	10,4	10,0	9,7	9,8	9,5	9,4	10,3
<i>Stocks Same Week Previous Year</i>	<i>86 995</i>	<i>83 086</i>	<i>83 823</i>	<i>93 701</i>	<i>95 607</i>	<i>96 648</i>	<i>93 478</i>	<i>92 432</i>	<i>91 246</i>	<i>82 813</i>	<i>79 050</i>	<i>78 503</i>	<i>74 169</i>
GERMANY (99,8%)	256 201	231 671	248 590	280 510	296 653	298 076	309 813	301 726	293 588	274 059	275 789	296 011	306 482
Days of production	9,2	8,3	8,9	10,0	10,7	10,8	11,1	10,8	10,2	9,4	9,5	10,2	10,5
<i>Stocks Same Week Previous Year</i>	<i>246 142</i>	<i>253 336</i>	<i>272 592</i>	<i>288 706</i>	<i>300 080</i>	<i>290 480</i>	<i>286 021</i>	<i>265 990</i>	<i>254 299</i>	<i>240 073</i>	<i>243 535</i>	<i>244 399</i>	<i>252 838</i>
SPAIN , PORTUGAL (95,4%)	107 648	92 337	99 243	102 873	115 042	111 748	112 631	116 018	116 596	113 385	113 440	110 253	108 086
Days of production	10,4	8,9	9,5	9,8	11,0	10,7	10,7	10,7	10,8	10,5	10,5	10,2	10,0
<i>Stocks Same Week Previous Year</i>	<i>107 295</i>	<i>97 145</i>	<i>104 311</i>	<i>113 056</i>	<i>123 631</i>	<i>119 667</i>	<i>114 896</i>	<i>109 066</i>	<i>103 871</i>	<i>86 220</i>	<i>85 524</i>	<i>77 610</i>	<i>85 586</i>
NL, BE, UK (84,6%)	44 510	46 978	51 461	54 835	45 774	46 545	50 390	42 341	38 034	39 835	39 956	53 884	53 088
Days of production	6,4	6,8	7,4	7,9	6,6	6,8	7,5	6,1	5,4	5,6	5,7	7,6	7,5
<i>Stocks Same Week Previous Year</i>	<i>39 228</i>	<i>42 424</i>	<i>43 274</i>	<i>39 723</i>	<i>41 320</i>	<i>41 986</i>	<i>44 195</i>	<i>39 374</i>	<i>39 846</i>	<i>41 906</i>	<i>40 787</i>	<i>47 117</i>	<i>42 278</i>
ITALY , AUSTRIA (94,0%)	178 626	166 691	177 828	180 375	189 063	181 810	176 027	169 872	174 512	170 779	169 372	169 133	171 705
Days of production	15,7	14,9	15,9	16,0	16,5	15,8	15,3	14,8	15,2	14,8	14,7	14,3	14,6
<i>Stocks Same Week Previous Year</i>	<i>186 148</i>	<i>164 922</i>	<i>171 661</i>	<i>173 405</i>	<i>173 071</i>	<i>159 399</i>	<i>150 550</i>	<i>148 986</i>	<i>153 440</i>	<i>130 653</i>	<i>133 191</i>	<i>139 147</i>	<i>142 602</i>
BG, CZ, GR, HR, HU, LT, PL, RO, SK, SR (90,6%)	118 846	109 103	122 469	128 806	132 786	129 796	131 319	127 630	125 737	124 957	123 219	121 023	125 494
Days of production	12,5	11,5	12,9	13,7	14,1	14,0	14,1	13,7	13,5	13,4	13,0	12,8	13,2
<i>Stocks Same Week Previous Year</i>	<i>110 584</i>	<i>107 031</i>	<i>113 755</i>	<i>119 298</i>	<i>112 711</i>	<i>113 799</i>	<i>103 600</i>	<i>104 620</i>	<i>94 552</i>	<i>94 206</i>	<i>94 230</i>	<i>96 922</i>	<i>95 317</i>

* stock level on Monday 6 o'clock a.m.

(%) : representativity of the sample based on the total European 2024 production or on the country (or group of countries) 2024 production.

ENLARGED SAMPLE

in tons & %	2026												
	01	02	03	04	05	06	07	08	09	10	11	12	13
RCCM STOCKS* (94,5%)	1117 690	1150 764	1097 526	1037 132	992 175	963 942	924 335	903 208	895 011	900 754	878 017	831 442	825 617
Days of supply	14,1	14,5	13,7	12,7	12,2	11,8	11,3	11,0	10,9	11,0	10,7	10,3	10,3
Δ STOCKS / Previous Week	+169 476	+33 074	-53 238	-60 394	-44 957	-28 233	-39 607	-21 127	-8 197	+5 743	-22 737	-46 575	-5 825
	+17,9%	+3,0%	-4,6%	-5,5%	-4,3%	-2,8%	-4,1%	-2,3%	-0,9%	+0,6%	-2,5%	-5,3%	-0,7%
Same Week Previous Year													
					1031 563	1002 346	991 562	980 958	972 671	981 000	951 108	933 620	937 090
					-3,8%	-3,8%	-6,8%	-7,9%	-8,0%	-8,2%	-7,7%	-10,9%	-11,9%
of which													
FRANCE (95,4%)	150 462	152 329	146 529	139 315	135 733	133 731	131 939	128 896	129 844	127 012	123 345	125 412	119 127
Days of supply	14,8	15,0	14,1	13,1	12,8	12,8	12,4	12,1	12,2	11,9	11,5	11,7	11,1
Stocks Same Week Previous Year	123 506	129 198	120 073	111 871	109 297	108 943	104 269	102 298	101 502	102 219	103 108	100 979	102 171
GERMANY (99,8%)	438 613	449 523	428 180	400 629	371 744	358 210	336 429	326 420	323 815	327 349	319 423	295 504	297 309
Days of supply	14,7	15,0	14,0	12,8	11,9	11,5	10,8	10,4	10,4	10,5	10,2	9,5	9,8
Stocks Same Week Previous Year	454 519	459 285	437 003	430 462	415 961	401 386	384 693	386 959	386 265	385 497	372 237	371 020	374 634
SPAIN , PORTUGAL (95,4%)	163 188	173 544	169 837	165 269	152 772	150 657	149 830	151 041	149 769	150 837	147 915	134 063	142 662
Days of supply	15,0	15,9	15,7	15,0	13,6	13,4	13,3	13,5	13,3	13,4	13,2	11,1	12,2
Stocks Same Week Previous Year	171 773	171 680	166 441	163 393	163 581	157 371	153 918	154 572	149 007	154 250	146 230	148 323	142 971
NL, BE, UK (84,6%)	109 255	110 572	102 353	93 669	93 382	92 509	88 505	89 187	89 736	86 378	86 652	75 122	75 875
Days of supply	15,1	15,3	14,2	13,0	13,0	13,2	12,6	12,7	12,8	12,3	12,3	10,7	10,8
Stocks Same Week Previous Year	95 590	96 925	95 407	94 821	94 172	94 093	96 534	102 897	105 154	98 837	98 549	89 659	95 190
ITALY , AUSTRIA (94,0%)	118 469	132 057	128 287	121 936	118 262	116 193	109 084	103 506	96 935	104 013	100 763	100 509	93 131
Days of supply	10,2	11,6	11,2	10,2	9,7	9,6	9,0	8,5	8,0	8,6	8,3	8,3	7,7
Stocks Same Week Previous Year	112 862	128 871	131 751	119 595	115 037	114 953	115 407	111 681	108 143	117 725	115 402	111 623	108 757
BG, CZ, GR, HR, HU, LT, PL, RO, SK, SR (90,6%)	137 703	132 739	122 340	116 314	120 282	112 642	108 548	104 158	104 912	105 165	99 919	100 832	97 513
Days of supply	13,3	12,9	11,8	11,2	11,6	10,9	10,5	10,1	10,2	10,2	9,6	9,7	9,4
Stocks Same Week Previous Year	132 483	134 893	124 420	129 816	133 515	125 600	136 741	122 551	122 600	122 472	115 582	112 016	113 367

* stock level on Monday 6 o'clock a.m.

(%) : representativity of the sample based on the total European 2024 production or on the country (or group of countries) 2024 production.



in tons & %	2026										YEAR TO DATE	
	05	06	07	08	09	10	11	12	13	(Since week 01)		
WEEKLY PRODUCTION* (94,5%)	517 099	517 974	529 008	534 827	537 687	527 791	533 494	506 594	510 587	CUMULATED PRODUCTION	6 561 630	
Δ PRODUCTION / Previous Week	tons	+1 026	+ 875	+11 034	+5 819	+2 860	-9 896	+5 703	-26 900	+3 993	Δ CUM. PROD. / CUM. PROD. Previous year	-79 153
	%	+0,2%	+0,2%	+2,1%	+1,1%	+0,5%	-1,8%	+1,1%	-5,0%	+0,8%		-1,2%
Same Week Previous Year	tons	530 918	521 447	527 915	543 187	533 049	528 781	509 809	513 171	528 268	CUMULATED PROD. PREVIOUS YEAR	6 640 783
	%	-2,6%	-0,7%	+0,2%	-1,5%	+0,9%	-0,2%	+4,6%	-1,3%	-3,3%		
of which												
FRANCE (95,4%)	66 988	67 076	72 594	71 441	68 540	66 785	71 543	72 356	60 981		856 417	
Production Same Week Previous Year	64 748	63 219	61 439	66 770	61 605	62 993	63 360	64 783	65 862		805 358	+6,3%
GERMANY (99,8%)	189 083	192 635	194 350	194 073	206 709	200 526	195 202	174 948	191 908		2 459 368	
Production Same Week Previous Year	195 741	187 980	193 501	202 476	200 940	191 618	182 161	191 623	188 269		2 443 572	+0,6%
SPAIN , PORTUGAL (95,4%)	67 340	68 669	74 429	76 848	74 147	72 595	70 466	74 701	69 832		910 904	
Production Same Week Previous Year	72 150	72 062	73 748	73 249	71 013	76 414	70 976	74 690	74 034	CUMULATED PRODUCTION	927 290	-1,8%
NL, BE, UK (84,6%)	47 964	45 665	45 181	49 272	49 608	45 794	48 756	35 056	48 425	(Current and previous year in tons - Δ in %)	570 451	
Production Same Week Previous Year	48 995	46 383	49 514	50 485	49 237	42 044	47 691	37 889	50 385		609 583	-6,4%
ITALY , AUSTRIA (94,0%)	81 477	78 514	77 147	79 580	74 921	78 744	80 327	84 355	76 338		959 341	
Production Same Week Previous Year	79 137	82 279	82 172	80 388	78 034	84 453	77 480	76 552	78 142		971 141	-1,2%
BG, CZ, GR, HR, HU, LT, PL, RO, SK, SR (90,6%)	64 247	65 415	65 307	63 613	63 762	63 347	67 200	65 178	63 103		805 149	
Production Same Week Previous Year	70 147	69 524	67 541	69 819	72 220	71 259	68 141	67 634	71 576		883 839	-8,9%

* cumulated production on Monday 6 o'clock a.m.

(%) : representativity of the sample based on the total European 2024 production or on the country (or group of countries) 2024 production.

ENLARGED SAMPLE


in tons & %	2026										YEAR TO DATE	
	05	06	07	08	09	10	11	12	13	(Since week 01)		
WEEKLY DELIVERIES (94,5%)	562 056	546 207	568 615	555 954	545 884	522 048	556 231	553 169	516 412	CUMULATED DELIVERIES	6 684 227	
Δ DELIVERIES/Previous Week	tons	-14 411	-15 849	+22 408	-12 661	-10 070	-23 836	+34 183	-3 062	-36 757	Δ CUM. DEL. / CUM. DEL.Previous year	3 692
	%	-2,5%	-2,8%	+4,1%	-2,2%	-1,8%	-4,4%	+6,5%	-0,6%	-6,6%		+0,1%
Same Week Previous Year	tons	549 313	550 664	538 699	553 791	541 336	520 452	539 701	530 659	524 798	<i>CUMULATED DEL. PREVIOUS YEAR</i>	6 680 535
	%	+2,3%	-0,8%	+5,6%	+0,4%	+0,8%	+0,3%	+3,1%	+4,2%	-1,6%		
of which												
FRANCE (95,4%)	70 570	69 078	74 386	74 484	67 592	69 617	75 210	70 289	67 266		867 806	
<i>Deliveries Same Week Previous Year</i>	67 322	63 573	66 113	68 741	62 401	62 276	62 471	66 912	64 670		821 244 +5,7%	
GERMANY (99,8%)	217 968	206 169	216 131	204 082	209 314	196 992	203 128	198 867	190 103		2 517 667	
<i>Deliveries Same Week Previous Year</i>	210 242	202 555	210 194	200 210	201 634	192 386	195 421	192 840	184 655		2 458 903 +2,4%	
SPAIN , PORTUGAL (95,4%)	79 837	70 784	75 256	75 637	75 419	71 527	73 388	88 553	61 233	CUMULATED DELIVERIES	916 065	
<i>Deliveries Same Week Previous Year</i>	71 962	78 272	77 201	72 595	76 578	71 171	78 996	72 597	79 386	950 091	-3,6%	
NL, BE, UK (84,6%)	48 251	46 538	49 185	48 590	49 059	49 152	48 482	46 586	47 672	(Current and previous year in tons - Δ in %)	592 551	
<i>Deliveries Same Week Previous Year</i>	49 644	46 462	47 073	44 122	46 980	48 361	47 979	46 779	44 854	590 969	+0,3%	
ITALY , AUSTRIA (94,0%)	85 151	80 583	84 256	85 158	81 492	71 666	83 577	84 609	83 716		965 574	
<i>Deliveries Same Week Previous Year</i>	83 695	82 363	81 718	84 114	81 572	74 871	79 803	80 331	81 008	962 174	+0,4%	
BG, CZ, GR, HR, HU, LT, PL, RO, SK, SR (90,6%)	60 279	73 055	69 401	68 003	63 008	63 094	72 446	64 265	66 422		824 564	
<i>Deliveries Same Week Previous Year</i>	66 448	77 439	56 400	84 009	72 171	71 387	75 031	71 200	70 225	897 154	-8,1%	

* weekly deliveries = weekly production ± Δ stocks

(%) : representativity of the sample based on the total European 2024 production or on the country (or group of countries) 2024 production.